



Shout Out!!!

March Shout Out: We are pleased to recognize Mariah Louderback for her outstanding dedication and service to our local 4-H community. Mariah currently serves on the County Council, the 4-H Council Budget and Publicity Committee, and the Fair Board, where she leads advertising efforts. Beyond her official roles, Mariah is a constant source of support for our youth programs. Recently, she volunteered to sell “We Support 4-H” signs at County Club Days, collaborated with Amber to enhance the clarity of the fair book, and continuously provides encouragement to our youth. Her creative vision plays a significant role in Fashion Revue displays, and she is an invaluable contributor to pre-fair judging. Additionally, as one of our dedicated "Fair Moms," Mariah is a trusted mentor and supporter for many 4-H members throughout fair week. We sincerely appreciate Mariah’s hard work, leadership, and unwavering commitment to our 4-H community. Thank you so much all you have done to “Make the Best Better”! ***If you have anyone that you would love to recognize for going above and beyond in 4-H please email a brief description and a photo if you have one to asharpe@ksu.edu.***

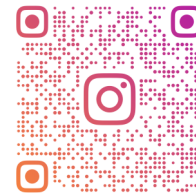


County Council Updates

- The next County Council meeting will be held on 3/24/25 at 7pm in the Sunflower room!
- Voting on Fair Theme! Any Suggestions click [HERE](#) to submit!

Ambassador Corner

- Check out the “Meet Your Ambassadors” [website!](#)
- Be sure to Like us on FaceBook and follow us on Instagram
- Watch for 4-H Day Interview Videos on Instagram and Facebook!



PTCO_4H



Exciting Experiences Await

Livestock Weigh In

- Beef: March 15: 9am-11am @ Rezac’s at 25289 Aiken Switch Road, Onaga, KS (This is a requirement to be eligible for Rate of Gain)
- Small Animal: April 30: 5pm-7pm @ Extension office in Westmoreland
- By **MAY 15** ALL LIVESTOCK **MUST** BE TAGGED



YQCA Training Dates

- 3/30 and 4/2 in the Sunflower room in Westmoreland
- This is needed for ALL State Fair and KJLS contestants!
- There is an online option for completion as well. Click [Here!](#)

Pottawatomie County Spring Fling Show

- April 19th
- Onaga Kansas Fair Grounds



Area Livestock Shows

- Alpha Gamma Royal: March 29: Manhattan, KS
- Marion County Spring Beef Show: March 30: Hillsboro, KS
- Aggieville Showdown: April 4-5: Manhattan, KS
- Quality Beef Days: April 12: Blue Rapids, KS
- Northern Exposure Steer & Heifer: April 13: Beleville, KS
- Pottawatomie County Spring Fling: April 19: Onaga, KS
- Lyons Showdown: May 10: Lyons, KS
- Wabaunsee County Livestock Show: May 30-June 1: Alma, KS

Bichelmeyer Meats Tour

- March 21st
- Leaving Westmoreland 7:45am
- Call the Extension Office to sign up! There is room for 14 members, but families are welcome to drive as well!



2025 Blue Dragon Classic Youth Livestock Judging

- April 7th with Registration due April 1st
- Call the Extension office to get signed up!!! This is a great opportunity with wonderful reviews!

Junior Superintendents

If you are interested as serving as a Junior Superintendent for the Fair please reach out to the extension unit BEFORE April 1st! You will work closely with the Superintendent to be a source of information for other members in your chosen project area! This is a great experience for our older members to help other members!

K-State Junior Meat Goat Producers Day

- March 22, 2025
- Registration has closed, but late registration is an option.
- The flyer is attached!

Cool Careers Video Contest

Have you ever wanted to try your hand at video production? Kansas 4-H and HirePaths are introducing a Cool Careers 4-H Video Contest, so here's your chance to become director, cinematographer, editor and/or producer of your own video! This competition allows members to learn about a career and then produce a video to create their own episode of the series Cool Careers. Click [HERE](#) for more information!



4-H Camp 2025

All 4-H camp sessions are now available for registration online at www.rockspringsranch4hcamp.org. This includes half week, full week, Leaders in Training (LIT), and Counselors in Training (CIT) sessions.

4-H TRIPLe E Exchange Experience

- Multi-County 4-H Interstate Exchange Trip and 4-Hers 12-18yrs old by June 10th 2025 are eligible
- Recent Trips include Ohio in 2023 and North Carolina in 2024: We stayed with 4-H families to learn their customs, lifestyle, 4-H activities, and toured educational and historical sites in their states, plus en-route.
- Week of July 6th 2025, we will be hosting 4-Hers/Chaperones from North Carolina and Pennsylvania
- 2026 we will travel to Eastern Pennsylvania
- Currently seeking families to become involved with the only cost being a \$75 application fee per 4-Her, and requirement to help with fundraisers and activities. Expenses covered by 4-H TRIPLe E through fund raising.
- Interested?? Contact Cherie Trieb at 785-844-0781: Next meeting: February 25th, 7:00 PM at Green Valley Community Center, Green Valley Road, Manhattan. Please plan to arrive early, if this is your 1st meeting.

KSRE Insect-Themed Art Contest

The K-State Research and Extension Pesticide Safety and IPM Program is hosting its annual insect-themed art contest, open to all ages and skill levels in Kansas! This year, the theme is “By the Light of the Moon: Insects at Night.” The goal is to explore which insects are active or inactive at night and why, then create artwork that fits the contest theme.

Kansas Youth Range Camp

- June 10-13, Council Grove, KS
- \$300 Registration Fee with scholarships available!
- See Attached Flyer
- Register [HERE!](#)

Citizen Washington Focus

Greetings CWF delegates and families! We will be attending the 2nd Session 6/14-6/20: Leaving Manhattan on 6/11 and returning on 6/21/25! The future meetings will be held in Portoff Hall at 7pm and the dates are **March 18**, April 15, May 20 with the departure on June 11 (early a.m. from the Riley County Extension Office). The tentative conference schedule can be found [HERE](#).

Riley County Kennel Club Schedule: Spring 2025

- Practices will be from 6:45 - ~8:00, on either Tuesdays or Wednesdays at Pottorf Hall, Riley Co Fairgrounds.
- January, Wednesday January 8, Wednesday January 15, Wednesday January 22, Wednesday January 29
- February, Wednesday February 5, Wednesday February 12, Wednesday February 19, Tuesday February 25
- March, Tuesday March 4, Wednesday March 12, Wednesday March 19, Tuesday March 25
- April, Wednesday April 2, Tuesday April 8, Wednesday April 16 Tuesday April 22, Wednesday April 30
- May, Wednesday May 7, Tuesday May 13, Wednesday May 21 Tuesday May 27
- June, Wednesday June 4, Tuesday June 10, Tuesday June 17, Wednesday June 25
- County Fair dates: June 8 Showmanship and Obedience, June 29 Agility and Rally Obedience

Horse Judging Contest

- March 21st
- During Equifest in Salina, KS
- Check in 7:45am with Contest beginning at 8:30am
- For more information please click [HERE](#)

ZBooks - Project Reports Online!

A new online record book option is here for Kansas 4-H youth. Zbooks provides an online platform for keeping and organizing project report records. Zbooks should make projects reports a lot easier to make and maintain!

-The website for zbooks is: 4h.zsuite.org

-Visit the Kansas information site [here](#).

-Find a quick video overview of using [Zbooks for record projects at this link](#).

Also, some perks of Zbooks are:

- Mobile friendly- jot down notes, weights, ear tags, expenses, etc on the spot!
- Internet based- you can work on them from any device that is connected to the internet.
- Unlimited amount of entries until final report is submitted- youth select the allowed number of entries to print on final report, allowing them to prioritize, summarize, etc.
- Permanent Record is also included possible awards to think about!

Newsletter Suggestions

If you have anything you would like to see in the Newsletter each month feel free to email Amber at asharpe@ksu.edu and I can get it in there!



Dates to Remember

March

- 1 Video Submission Due for Regional Record Book Winners
- 1 Senior 4-H Scholarship Applications Due
- 1 Jr. Swine Day at KSU
- 15 Beef Weigh In at Rezac's on Aiken Switch Road
- 18 CWF Meeting: Portoff Hall: 7pm
- 21 State Horse Judging Contest: Equifest: Salina, KS
- 21 Bichelmeyer Meats Tour
- 22 Jr Goat Day at KSU
- 30 YQCA Training: Westmoreland

April

- 2 YQCA Training: Westmoreland
- 5 KSU Invitational Meats Judging Contest
- 7 Hutchinson Livestock Judging Contest: Lyons, KS
- 15 CWF Meeting: Portoff Hall: 7pm
- 17 State Youth Entrepreneurship Contest Judging
- 19-24 National 4-H Conference, Washington D.C.
- 30 Small Animal Weigh In at the Extension Office in Westmoreland

May

- 15 Tagging Deadline for ALL Livestock
- 20 CWF Meeting: Portoff Hall: 7pm

June

- 4-6 Discovery Days
- 10-13 KS Youth Range Camp
- 11-21 Citizen Washington Focus Trip
- 13-15 State Geology Field Trips
- 22-28 National Shooting Sports Championship

June

- Rock Springs Camp
- 10-13 KS Youth Range Camp

July

- 10 Fair Entries Due on Fair Entry
- Rock Springs Camp

July/August

- 30-3 The Best Fair in America! Pottawatomie County!
- 1 Cool Careers Video's Due to HirePaths

September

- 5-14 Kansas State Fair

October

- 1 New 4-H Year

Beef Weigh-In and Tagging

March 15th 9am-11am
@ Rezac's
25289 Aiken Switch Rd
Onaga, Kansas

Pottawatomie
County



BICHELMeyer MEATS TOUR

**DON'T
MISS
OUT**



**TOURING THEIR PROCESSING
PLANT IN KANSAS CITY!**

**MARCH 21ST
10:30AM**

**704 CHEYENNE AVE,
KANSAS CITY, KS 66105**

**WE HAVE ROOM FOR 14 4-H
MEMBERS TO RIDE WITH US!**

CALL THE EXTENSION OFFICE AT 785-457-3319 TO SIGN UP!

APRIL 19, 2025

POTTAWATOMIE COUNTY

SPRING FLING

★ LIVESTOCK SHOW ★



Show Times

Sheep-Goat - 9:00 AM
Cattle - 12:00 PM
Swine - 5:00 PM
OR 30 Minutes After
Completion of Prior Species

New for
2025

Contestants can be up
to 21 years of age.
Showmanship for 4-H age
contestants only.
No showmanship 19-21.

Online Registration

www.showman.app
\$10 Late Fee Day of Show

Details

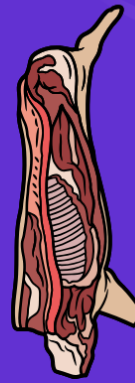
Judge: Jacob Klautt
Elite Show Supply Trailer
Showmanship \$5 Per Specie
Concessions on Site

Camping Spots

Available for \$35
785-477-2317

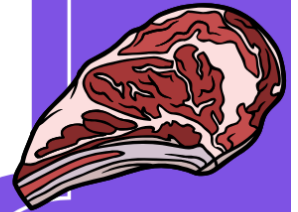
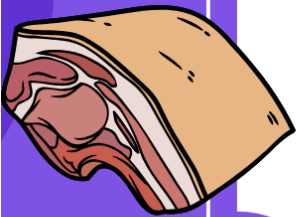
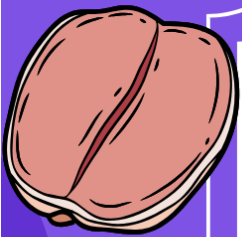
POTTAWATOMIE COUNTY FAIRGROUNDS
ONAGA, KANSAS

Questions Contact
Darrin Figge 785-456-5762 defigge@hotmail.com



KANSAS STATE UNIVERSITY

INVITATIONAL MEAT JUDGING CONTEST



APRIL 5, 2025

**WEBER HALL
REGISTRATION OPENS AT 7:00AM
CONTEST BEGINS AT 8:00AM**

**REGISTRATION INFO TO COME
QUESTIONS TO ERIN BEYER
ERBEYER@KSU.EDU**

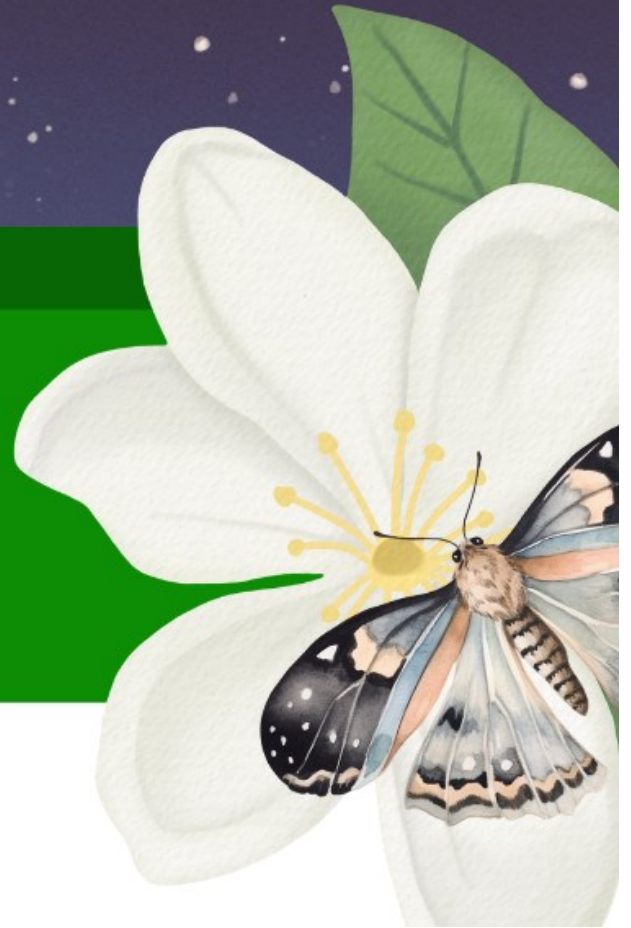


2025 ART CONTEST BY THE LIGHT OF THE MOON INSECTS AT NIGHT

Join in the fun!

Learn more at
[https://www.ksre.k-state.edu/
pesticides-ipm](https://www.ksre.k-state.edu/pesticides-ipm)

Submission Deadline:
April 15, 2025



K-STATE
Research and Extension

Integrated Pest
Management

Are YOU interested in plants, livestock or wildlife?



KANSAS YOUTH RANGE CAMP

White Memorial Camp, Council Grove, KS

Upcoming High School Sophomores, Juniors, & Seniors

Learn about range plant identification, plant growth, stocking rates, livestock nutrition, and rangeland wildlife management

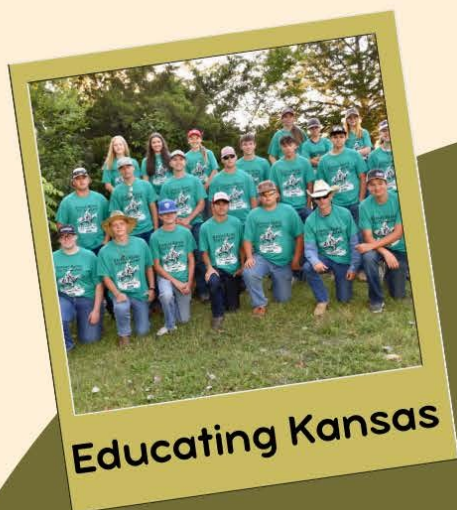
Enjoy field trips, hands on learning, a steak dinner, swimming, fishing, and hiking!



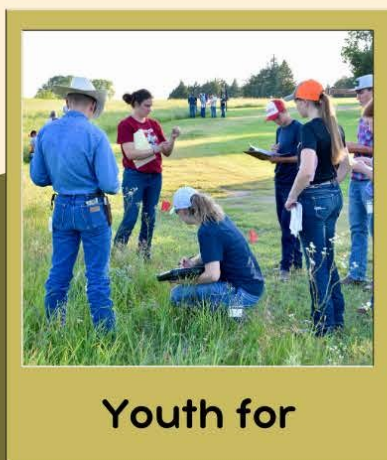
June 10-13, 2025

COST: \$300

Contact your local Conservation District for scholarship opportunities!



Educating Kansas



Youth for

REGISTER NOW



Over 60 years!

Sponsored by:
Kansas Section,
Society for Range
Management



Contact:
Courtney Jackson
KS Youth Range Camp Chair
620-767-5111 ext. 3
courtney.jackson@usda.gov

www.kglc.org/range-youth-camp-registration.cfm